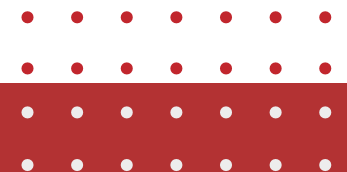


PARTNER



Interactive Kiosk Solutions for Self-Service

Partner Tech Corp.
www.partnertechcorp.com

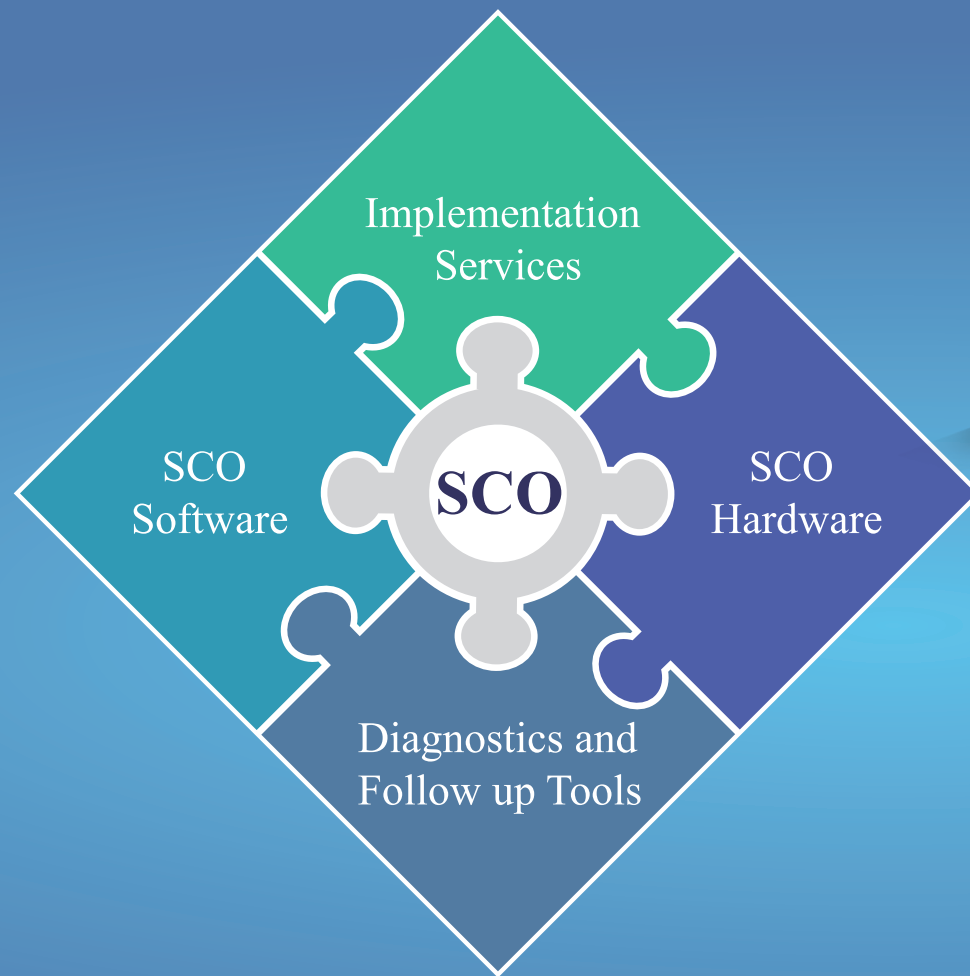




Self-Checkout :::::

AI-Powered Theft Protection Modular & Sleek Design

Partner Tech's cutting-edge SCO solutions combine intuitive, space-saving design with smart AI-driven fraud prevention. These comprehensive solutions offer everything you need, including SCO hardware, peripherals, and software with an API tool kit for integration with the retailer's POS system. In addition, Partner Tech offers implementation services and diagnostics with real-time SCO monitoring to proactively track the performance of the system.



SeeYourSCO – Real-time KPI Monitoring & Management

Partner Tech offers the capability to track and manage all the self-checkout stations remotely – in real-time. This allows merchants to proactively monitor the system's KPI metrics in real-time and quickly identify issues. This is mission critical to minimize downtime, increase usage and prevent fraud.





AI-Powered, Modular & Design Forward

Starling SCO

A fully integrated, AI-driven self-checkout solution that has everything you need in a compact and modern design. Customizable with different display sizes, security features, color options and peripherals.



Increase Sales Capacity

Increase the store's sales capacity while reducing operational cost.



Quick & Convenient

Offer a streamlined, more convenient checkout with less waiting in line.



Intelligent Fraud Prevention

Prevent fraud with AI-based computer vision and weight verification.

Self-Checkout



Fully Integrated Self-Checkout

- Fully integrated SCO
- 15.6" or 21.5" display
- Camera for item identification
- Surveillance camera
- Security scale for weight verification
- Age verification camera
- Bioptic 1D/2D scanner with produce scale
- Electronic Article Surveillance (EAS)
- Brackets for payment terminal
- Cash management option
- LED tri-light pole





AI-Powered, Modular & Design Forward

Alfred SCO

A modular self-checkout solution with a universal tabletop mount that can be installed on any type of counter. Customizable with different display sizes, security features, and peripherals.

Support for All Payment Types Cash, Card and Contactless

- Contactless & Mobile Payments
- Card Payments MSR & chip and PIN (brackets available for most payment terminals)
- Cash Management with bill and coin recycling (optional)



Self-Checkout



Universal Tabletop Self-Checkout

- Tabletop installation
- 15.6" or 21.5" display
- Camera for item identification
- Surveillance camera
- Security scale for weight verification
- Age verification camera
- Bioptic 1D/2D scanner with produce scale
- Electronic Article Surveillance (EAS)
- Brackets for payment terminal
- Cash management option
- LED tri-light pole





Interactive Kiosk Solutions ::::

Empower your customers with the convenience of self-service kiosks for use in retail, food service, lodging, healthcare, transportation, government, gaming, and hospitality. Partner Tech's family of space-saving kiosk solutions, includes countertop, floor-standing, wall mounted as well as double-sided kiosk models, designed to address diverse requirements and budgets. Our kiosks come in display sizes ranging from 15 to 32 inches and can be configured with different processors, memory sizes, and peripherals to cater to different needs.



Hospitality



Retail



Hotel



Healthcare

PAULA

The Paula is compact design. It is the perfect way to increase your service level on the front-end. This next-generation terminal allows you to deliver a world-class checkout experience no matter the size of your checkout space. Designed for contactless transactions, the Paula has fewer equipment failures and attendant interventions than full cash self-checkout. Retailers are installing these in their stores as express lanes, improving the customer experience, driving more customer traffic through self-checkout, and reducing costs.



Interactive Kiosk Solutions

Perfect Kiosk for Retail

- 21.5" PCAP touch
- Built-in 2D scanner
- Built-in thermal printer
- High-performance Intel and Android CPU
- Optional Wi-Fi Connection





Self-service kiosks
cut down lines
during peak hours.



K27 II

Cut labor costs, reduce wait times, and boost capacity effortlessly with Partner Tech's K27 II kiosk, ideal for quick-service restaurants, as well as hospitality and retail settings. The K27 II allows you to optimize floor space with its compact design, available in wall mount or floor stand options, including the flexibility of double-sided operation.

Equipped with a 3-inch thermal printer and a customizable range of peripherals, the K27 II adapts to your needs. Choose from options such as a 2D barcode scanner, EMV terminal brackets, 5MP camera, RFID/NFC reader, ADA keypad, and LED indicator lights. Engineered for maximum reliability and uptime, and the rugged and lockable enclosure shields the kiosk from damage. Easy-to-replace modules keep repair costs low but, also minimize disruptions to your operations.



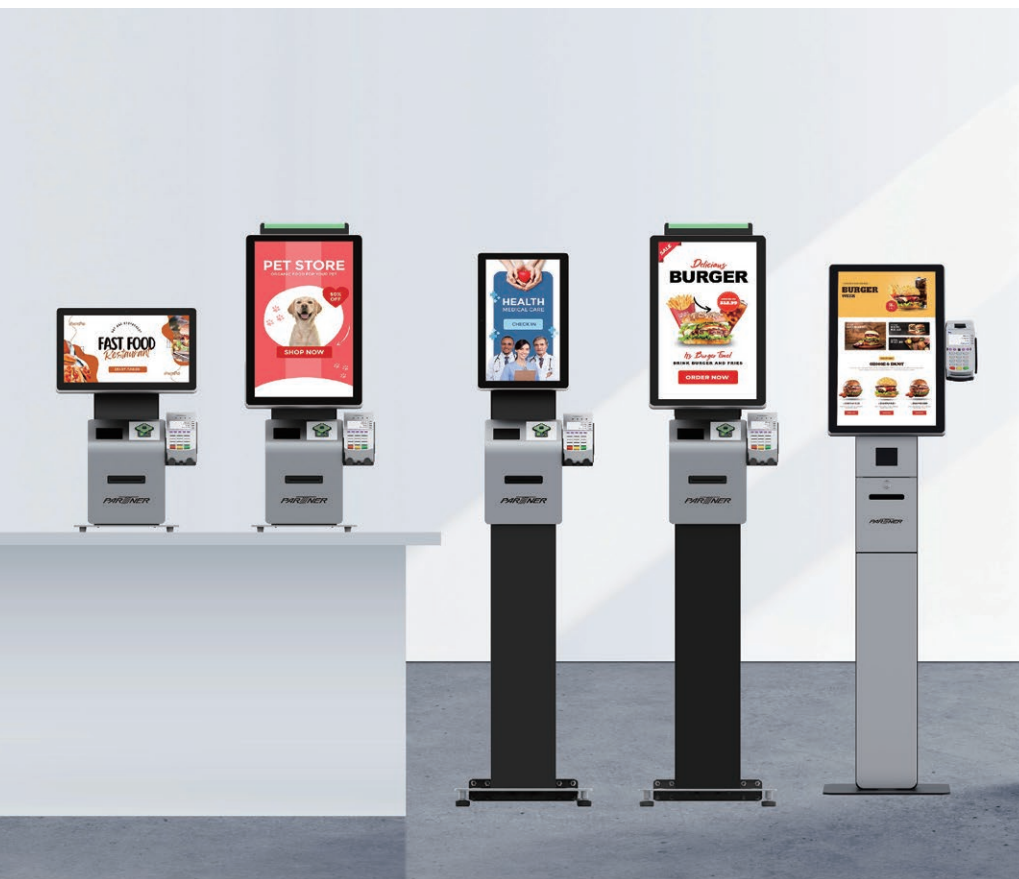
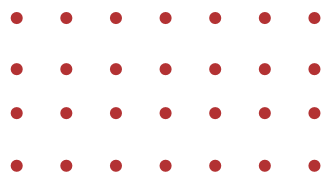
Single & Double-Sided Kiosk

- Bright 27" (1920 x 1080) PCAP touch display
- Wall mount or floor stand
- Single or double-sided operation
- Support for Windows 10/11, Linux Ubuntu and Android 11
- Fanless, high-performance CPU (Windows – Elkhart Lake, Alder Lake) (Android – Rockchip ARM RK3399)
- Multiple payments options (MSR, EMV and contactless)
- Customizable and modular design
- ADA keypad (option)
- Color, shape and appearance customization service

Easier Maintenance with Modular Design

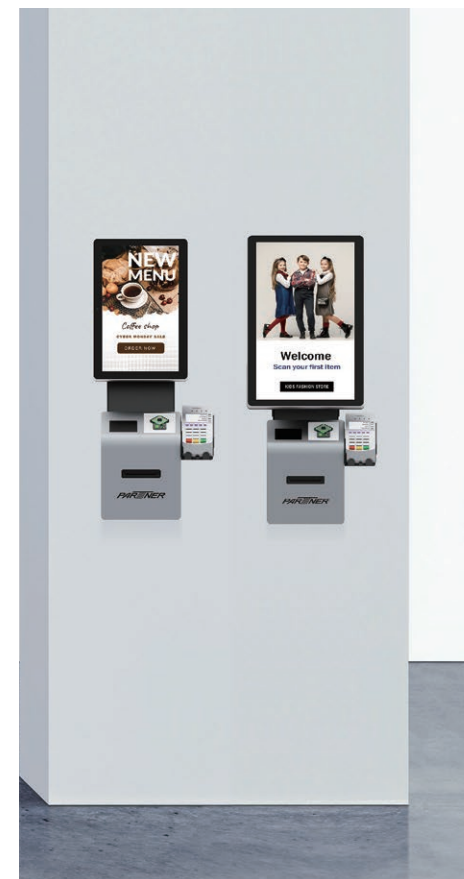


K27 II ::::



ALFRED AD-215/156

The Alfred AD-215/156 self-service kiosk expedites ordering and checkout for quick-service restaurants and convenience stores. Additionally, it enhances self-check-in processes at doctor's offices, corporate offices, and hotels. With a choice of a 15.5- or 21.5-inch PCAP display, the kiosk includes an integrated thermal printer and a diverse range of POS and payment peripherals. Alfred's space-saving design offers flexibility with options for a floor stand, countertop stand, or wall-mounted installation.





2D barcode scanner

3" thermal printer

LED status indicator (option)
or Camera (option)

EMV payment bracket
(option)

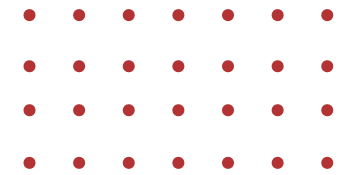
ADA keypad or
RFID/NFC reader (option)



Self-Service Kiosk

- 21.5" or 15.6" anti-glare PCAP touch display (portrait or landscape)
- 1920 x 1080 (300 nits)
- Android 11, Windows 10/11 & Linux Ubuntu 22.04
- Intel Elkhart Lake, Alder Lake (Windows)
Rockchip RK3399 (Android)
- Countertop / floor stand / VESA wall mount
- Built-in printer & payment capabilities
- MSR, ADA keypad, payment terminal brackets, 2D barcode scanner,
5 MP camera, RFID/NFC reader, LED status indicator (options)
- Wi-Fi and BT connectivity (options)

AD-215 / 156 ::::



AD-215-H



No Lines



Better Use of Hotel Resources

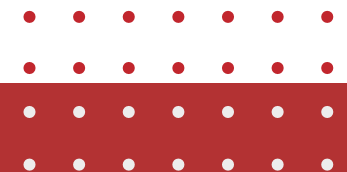


24 Hours Service



Enhance Customer Satisfaction

AD-215-H is a robust 21.5" hotel self-service kiosk designed for maximum efficiency, longevity, flexibility, and scalability. Self-service not only eliminates waiting in long check-in lines, but also makes the check-in/check-out process more convenient and private. AD-215-H offers various payment options and ways to interact with your customers. With an integrated high-quality OCR scanner, AD-215-H can provide accurate ID documents verification to speed up the check-in process.



OCR Scanner



Room Card Dispenser



Hotel Self-Service/Check-in Kiosk

- 21.5" full HD PCAP display
- Intel Alder Lake & Elkhart Lake CPU
- High speed M.2 PCIe
- OCR scanner for verification of ID documents
- Hotel key dispenser
- Countertop / floor stand
- NFC/RFID reader, cash module, body temperature measurement, payment bracket, information rack, camera, LED status indicator (options)



AD-215-H :::

ALFRED AD-215-S/ AD-156-S

Maximize checkout efficiency with the AD-156-S self-checkout kiosk, perfect for grab-and-go shopping in high-volume retail settings like convenience, drug, specialty, liquor, and hardware stores. The embedded 2D area imager ensures swift scanning, enhancing throughput. Alfred facilitates seamless payments, supporting debit, credit cards, contactless, and mobile payments. The integrated 3-inch thermal printer swiftly produces receipts and coupons, while two durable side tables offer convenient space for items and bags.





Self-Service Checkout Kiosk

- 21.5" or 15.6" anti-glare PCAP touch display (portrait or landscape)
- 1920 x 1080 (300 nits)
- Android 11, Windows 10/11 & Linux Ubuntu 22.04
- Intel Elkhart Lake, Alder Lake (Windows)
- Rockchip RK3399 (Android)
- Wi-Fi and BT connectivity (options)
- Floor stand & two side tables
- Built-in printer & payment capabilities
- Embedded high-speed 2D area imager for barcode scanning
- MSR, ADA keypad, payment terminal brackets, 5MP camera, RFID/NFC reader, LED status indicator (options)

AD-215-S / AD-156-S ::::

Cosmo Printer Stand PS-107 / PS-103

The PS-103/PS-107 is a sleek printer stand designed to complement Partner Tech's all-in-one POS terminals. With a modern silver and black design, it seamlessly blends into POS environments, providing stability for the printer and VESA-mounted POS terminal. The stand conceals all cables for a clutter-free counter space and offers the convenience of accommodating a USB hub with four powered USB ports.





Flexible, Modular Design

Supported
POS Terminals
Partner Tech's
A4/A5/A7/E5/
G4/G5/J14

3" thermal printer



Standard VESA
Standard 75 x 75 VESA mount,
available for Partner Tech's
all-in-one POS terminals.

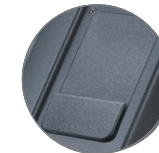
Optional integrated
peripherals



MSR



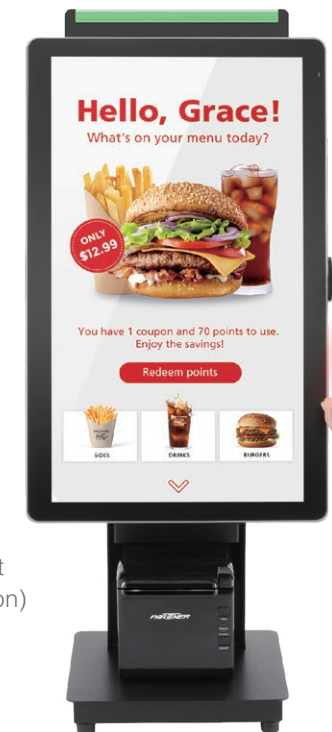
Fingerprint
reader



RFID reader



EMV payment
bracket (option)



Cosmo Printer Stand

- Aluminum construction 75 x 75 standard VESA mount
- Compatible with Partner Tech A4/A5/A7/E5/G4/G5/J14
- Supports the main display + one customer display
- Supported printers: Partner Tech RP-700, Epson TM-T70 and Star mC-Print3
- One single power source
- Optional USB hub with four powered USB ports
- Supports secondary storage and RAID function (subject to POS terminal function)
- Dimensions (W x H x D) :
PS-103: 225 x 390 x 270 mm / 8.86 x 15.35 x 10.63 in
PS-107: 732 x 324 x 272 mm / 28.82 x 12.76 x 10.71 in

PS-107 / PS-103 ::::



Partner Tech Corp.

2 F., No. 206, Jian 8th Rd., Zhonghe Dist., New Taipei City 235042, Taiwan

Phone: +886-2-29188500

sales@partner.com.tw

Partner Tech Corp.

www.partnertechcorp.com

